



## Florida Department of Transportation

RON DESANTIS  
GOVERNOR

2198 Edison Avenue  
Jacksonville, FL 32204

JARED W. PERDUE, P.E.  
SECRETARY

**For Immediate Release**

September 8, 2023

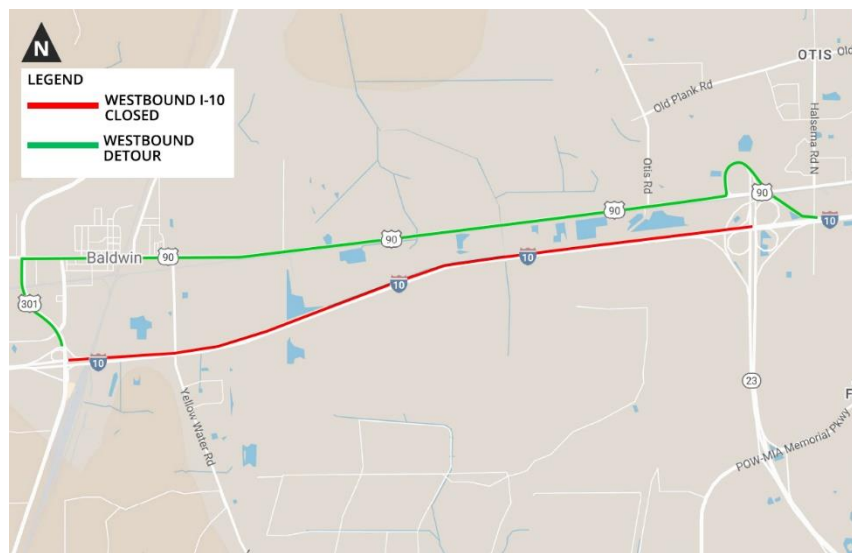
**Contact: Nathan Pick**

(904) 831-3368 | [nathan.pick@dot.state.fl.us](mailto:nathan.pick@dot.state.fl.us)

### Nightly Detours of I-10 West from State Road 23 to U.S. 301 Planned Sunday through Tuesday

**JACKSONVILLE, Fla.** – As part of the I-10 and U.S. 301 interchange improvement project, the westbound lanes of I-10 from State Road 23/First Coast Expressway to U.S. 301 are scheduled to close from 9 p.m. to 5 a.m. on the nights of Sunday, Sept. 10, Monday, Sept. 11 and Tuesday, Sept. 12, weather and unforeseen circumstances permitting. The overnight closure will be used to install signage over westbound I-10.

Traffic traveling west on I-10 will detour using State Road 23/First Coast Expressway, westbound U.S. 90, and southbound State Road 201 (U.S. 301 Baldwin Bypass) to rejoin I-10.



Superior Construction Company began the \$65 million interchange improvement project in February 2016 and is estimated to complete the work this summer, weather and schedule permitting.

Stay informed about lane closures and roadwork in your area by following FDOT District 2 at [@MyFDOT\\_NEFL](https://twitter.com/MyFDOT_NEFL) on Twitter, at [MyFDOTNEFL](https://www.facebook.com/MyFDOTNEFL) on Facebook or by visiting

[nflroads.com](http://nflroads.com). Drivers seeking real-time traffic alerts may visit [www.FL511.com](http://www.FL511.com) or download the FL511 app.

###

*Improve Safety, Enhance Mobility, Inspire Innovation*  
NFLRoads.com | @MyFDOT\_NEFL | Facebook.com/MyFDOTNEFL

*The Florida Department of Transportation's mission is to provide a safe transportation system that ensures the mobility of people and goods, enhances economic prosperity, and preserves the quality of the state's environment and communities. The department is committed to building a transportation system that not only fits the current needs of Florida's residents and visitors, but also enhances mobility throughout the state to accommodate its consistent and rapid growth. The unique nature of the Sunshine State and its year-round warm climate provides numerous opportunities to achieve the department's mission through multiple transportation modes including highways/streets, air, rail, sea, spaceports, transit, and the ever-expanding deployment of bicycle & pedestrian facilities.*